

4. 686
702



A-678647
A-38262

E

Handwritten musical notation on a single staff. It begins with a treble clef and a key signature of one sharp (F#). The notation includes various notes, rests, and dynamic markings such as *div.* and *mf*. There are large, sweeping curved lines above and below the staff, possibly indicating phrasing or performance instructions.

Handwritten musical notation on a single staff. It features a treble clef and a key signature of one sharp. The notation includes notes, rests, and dynamic markings like *dim.* and *allarg.*. Large curved lines are present above and below the staff.

Handwritten musical notation on a single staff. It starts with a treble clef and a key signature of one sharp. The notation includes notes, rests, and dynamic markings such as *f*, *pp a tempo*, *cres*, and *div.*. Large curved lines are visible above and below the staff.

Handwritten musical notation on a single staff. It begins with a treble clef and a key signature of one sharp. The notation includes notes, rests, and dynamic markings like *mf*. Large curved lines are present above and below the staff.

Handwritten musical notation on a single staff. It starts with a treble clef and a key signature of one sharp. The notation includes notes, rests, and dynamic markings such as *cres* and *div.*. Large curved lines are visible above and below the staff.

Handwritten musical notation on a single staff. It begins with a treble clef and a key signature of one sharp. The notation includes notes, rests, and dynamic markings like *pp adagio*. Large curved lines are present above and below the staff.



E

Handwritten musical notation on a single staff, bass clef, key signature of one sharp (F#). The notation includes a *ppiz* marking, a *3* (triple), *unite*, *ppiz*, and *f arco* markings.

Handwritten musical notation on a single staff, treble clef, key signature of one sharp (F#). The notation includes *dim* and *all.* markings.

Handwritten musical notation on a single staff, treble clef, key signature of one sharp (F#). The notation includes *div.*, *cres*, *f*, and *unite* markings.

Handwritten musical notation on a single staff, treble clef, key signature of one sharp (F#). The notation includes *dim* and *f* markings.

Handwritten musical notation on a single staff, treble clef, key signature of one sharp (F#). The notation includes *cres*, *f*, *pp*, and *div.* markings.

Handwritten musical notation on a single staff, treble clef, key signature of one sharp (F#). The notation includes *pp* and *adagio* markings.

cello



Andante Maestoso
Rio 1915

H. Oswald

Andante

Handwritten musical notation on a single staff. It begins with a treble clef, a key signature of one sharp (F#), and a 3/4 time signature. The music features a melodic line with a slur and a crescendo marking (*cres*). A *divisi* marking is present under the first few notes. The piece concludes with a *unite* marking.

Handwritten musical notation on a single staff. It starts with a treble clef and a key signature of one sharp (F#). The notation includes a slur, a *sub* marking, and a *div.* marking. The music consists of a series of rhythmic patterns.

Handwritten musical notation on a single staff. It begins with a treble clef and a key signature of one sharp (F#). The notation includes a slur, a *1^a volta* marking, and a *2^a volta* marking. The music features a melodic line with various rhythmic values.

Handwritten musical notation on a single staff. It starts with a treble clef and a key signature of one sharp (F#). The notation includes a *B* marking, a *piz* marking, and various accidentals (flats and naturals) on the notes.

Handwritten musical notation on a single staff. It begins with a treble clef and a key signature of one sharp (F#). The notation includes a *piz* marking and various accidentals (flats and naturals) on the notes.

Handwritten musical notation on a single staff. It starts with a treble clef and a key signature of one sharp (F#). The notation includes a *f* marking, a *dim* marking, and a *D* marking. The piece ends with a large *2* marking.



E

Handwritten musical notation on a single staff, featuring a treble clef, a key signature of one sharp (F#), and a 4/4 time signature. The notation includes several chords and melodic lines, with some parts crossed out with a thick black line.

Handwritten musical notation on a single staff, featuring a treble clef and a key signature of one sharp (F#). The notation includes a melodic line with slurs and dynamics markings: *dim* (diminuendo) and *unite* (united). A *f* (forte) dynamic marking is present at the end of the staff, followed by the tempo marking *a Tempo*.

Handwritten musical notation on a single staff, featuring a treble clef and a key signature of one sharp (F#). The notation includes a melodic line with slurs and dynamics markings: *cres* (crescendo) and *div.* (divisi). A section of the notation is heavily scribbled out with black ink.

Handwritten musical notation on a single staff, featuring a treble clef and a key signature of one sharp (F#). The notation includes a melodic line with slurs and dynamics markings: *f* (forte) and *mf* (mezzo-forte).

Handwritten musical notation on a single staff, featuring a treble clef and a key signature of one sharp (F#). The notation includes a melodic line with slurs and dynamics markings: *cres* (crescendo) and *f* (forte). A sharp sign (#) is written above the staff towards the end.

Handwritten musical notation on a single staff, featuring a treble clef and a key signature of one sharp (F#). The notation includes a melodic line with slurs and dynamics markings: *mp* (mezzo-piano) and *adagio* (slowly).

2.º violino



Andante Mac.Toso

H. Oswald

Rio 1915

Handwritten musical score for the second violin part of a piece by Heitor Oswald. The score is written on seven staves, each with a treble clef and a key signature of one sharp (F#). The tempo is marked "Andante" and the style is "Mac.Toso".

The score includes various musical notations and performance instructions:

- Staff 1:** Starts with a dynamic marking of *p* (piano). It features a melodic line with a crescendo (*cres*) and a section marked *div.* (divisi).
- Staff 2:** Continues the melodic line with a dynamic marking of *mf* (mezzo-forte). It includes a section marked **A**.
- Staff 3:** Features a crescendo (*cres*) and a section marked **1.ª volta** (first ending), followed by a section marked **2.ª volta** (second ending).
- Staff 4:** Continues the melodic line with a dynamic marking of *p*.
- Staff 5:** Continues the melodic line with a dynamic marking of *mf* and a section marked **C**.
- Staff 6:** Features a dynamic marking of *dim.* (diminuendo) and a section marked **D**.

The score is characterized by flowing melodic lines, often with slurs, and includes various dynamic markings and performance instructions such as *cres*, *div.*, *mf*, *dim.*, and *p*.



Contrabass.

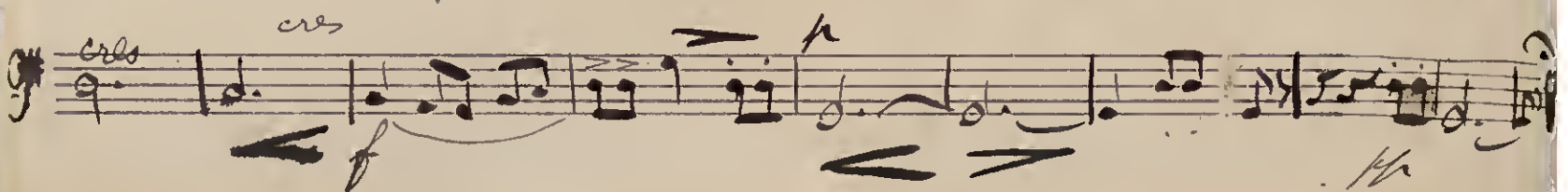
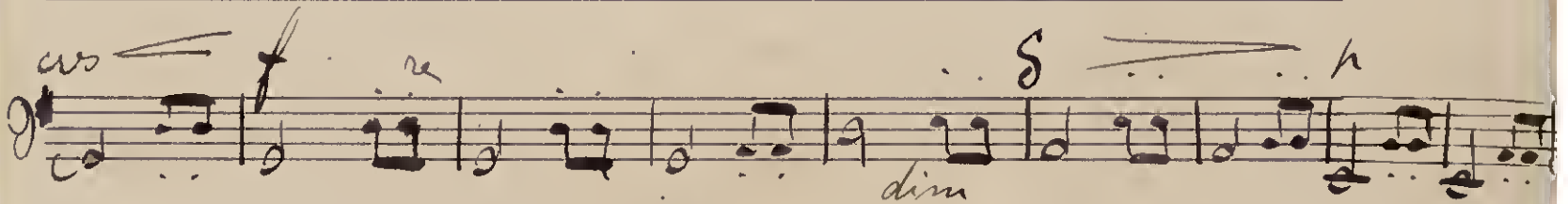
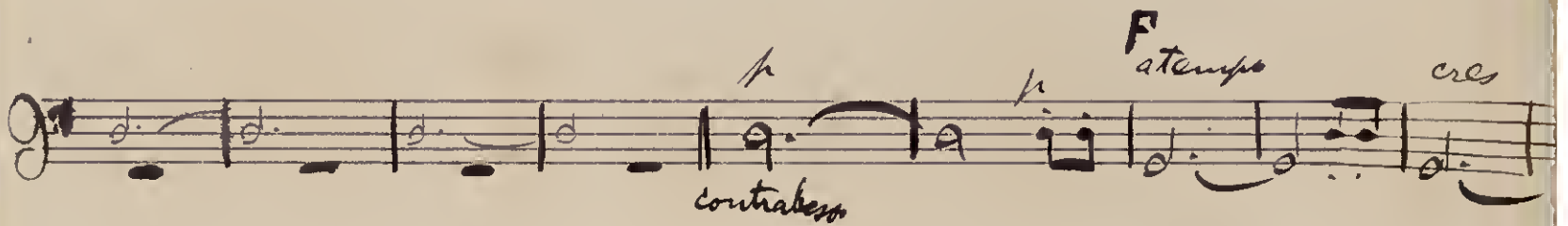
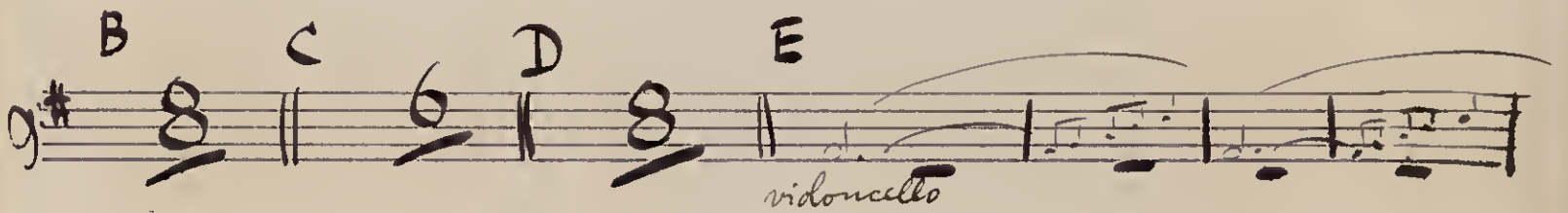
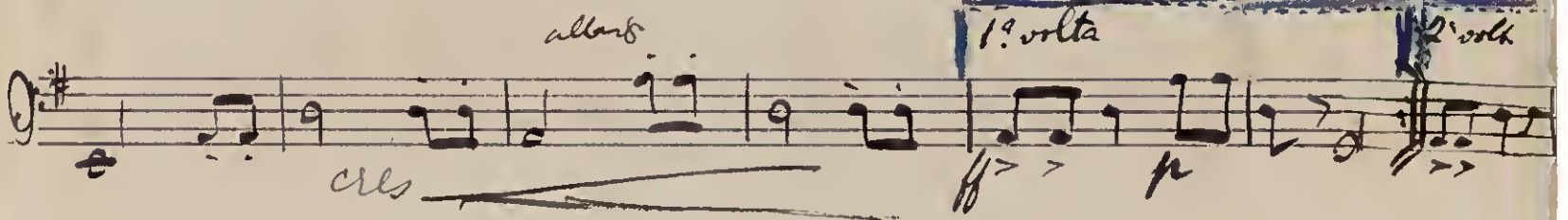
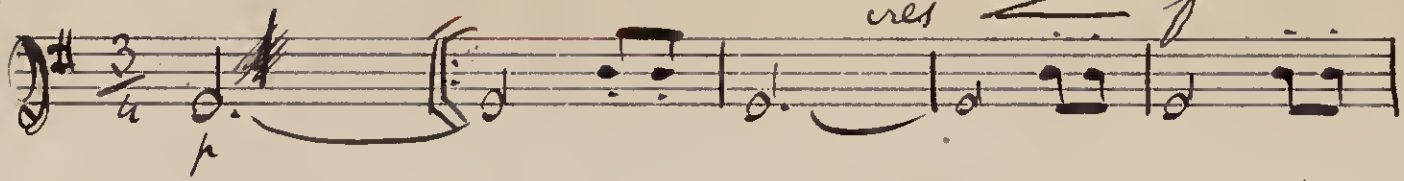
Andante marcato

H. Oswald.

Rio

15

Andante



V. d. l.



Andante maestoso

H. Oswald
Rio 1915

Andante

Handwritten musical notation on a single staff. It begins with a treble clef, a key signature of one sharp (F#), and a 3/4 time signature. The music starts with a *p* dynamic. A slur covers the first four measures, with *cres* written above it. The next two measures are marked *div.*. The final four measures are marked *f* and feature a complex rhythmic pattern with many beamed notes.

Handwritten musical notation on a single staff. It begins with a treble clef and a key signature of one sharp (F#). The music starts with a *mf* dynamic. A slur covers the first four measures. The next two measures are marked *p*. The final four measures are marked *A* and feature a complex rhythmic pattern with many beamed notes.

Handwritten musical notation on a single staff. It begins with a treble clef and a key signature of one sharp (F#). The music starts with a *div.* dynamic. A slur covers the first four measures, with *cres* written above it. The next two measures are marked *mf*. The final four measures are marked *1. volta* and *2. volta*, indicating repeat signs.

Handwritten musical notation on a single staff. It begins with a treble clef and a key signature of one sharp (F#). The music starts with a *pp* dynamic. A slur covers the first four measures, with *B* written above it. The next two measures are marked *div.*. The final four measures are marked *p* and feature a complex rhythmic pattern with many beamed notes.

Handwritten musical notation on a single staff. It begins with a treble clef and a key signature of one sharp (F#). The music starts with a *mf* dynamic. A slur covers the first four measures, with *C* written above it. The next two measures are marked *mf*. The final four measures are marked *mf* and feature a complex rhythmic pattern with many beamed notes.

Handwritten musical notation on a single staff. It begins with a treble clef and a key signature of one sharp (F#). The music starts with a *f* dynamic. A slur covers the first four measures, with *f* written below it. The next two measures are marked *dim*. The final four measures are marked *dim* and feature a complex rhythmic pattern with many beamed notes.