

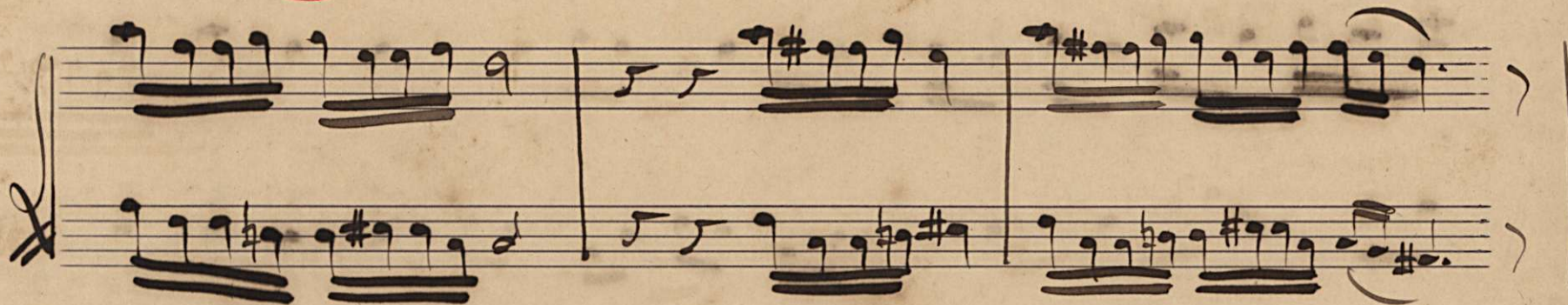
Cesar Franck

A 675992
A 35929

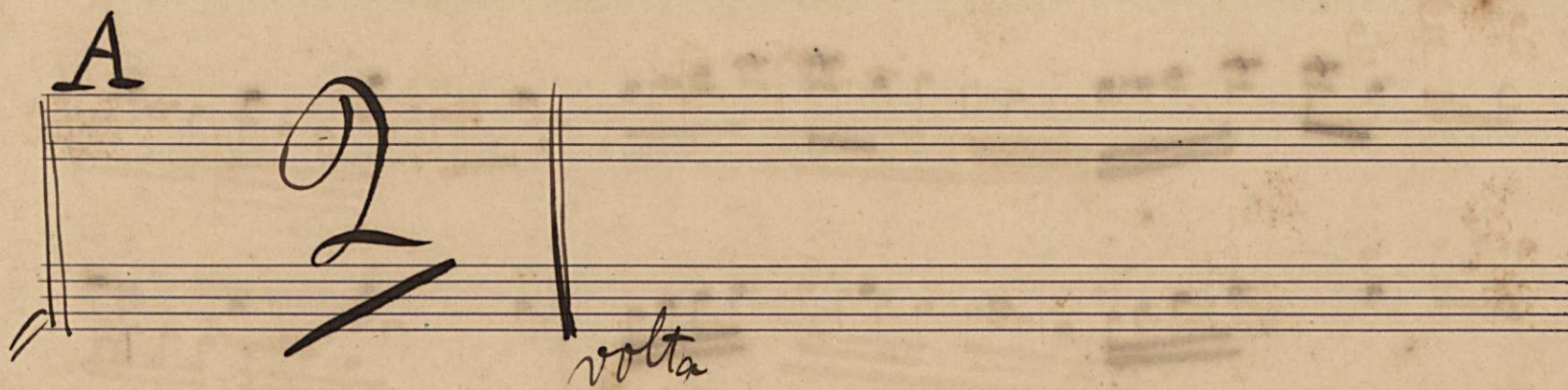
oboe 1 & 2

T. 995
629

moderato



A



volta

2. obre

Handwritten musical notation for the first system, consisting of two staves with treble and bass clefs. The notation includes various notes, rests, and accidentals (sharps and flats).

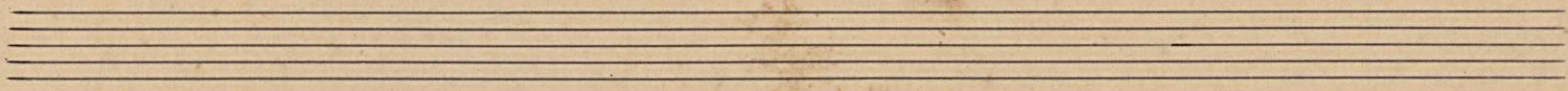
Handwritten musical notation for the second system, consisting of two staves with treble and bass clefs. The notation includes various notes, rests, and accidentals.

Handwritten musical notation for the third system, consisting of two staves with treble and bass clefs. The notation includes various notes, rests, and accidentals.

Handwritten musical notation for the fourth system, consisting of two staves with treble and bass clefs. The notation includes various notes, rests, and accidentals.



Handwritten musical notation for the first system, consisting of two staves. The top staff features a treble clef and contains several measures of music with notes, rests, and accidentals (sharps and flats). The bottom staff features a bass clef and contains corresponding notes and rests.



Handwritten musical notation for the second system, consisting of two staves. The top staff features a treble clef and contains several measures of music with notes, rests, and accidentals. The bottom staff features a bass clef and contains corresponding notes and rests.



Handwritten musical notation for the third system, including a section marked "B". The top staff is labeled "flauti" and the bottom staff is labeled "oboi". The notation includes notes, rests, and accidentals.

Handwritten musical notation for the fourth system, consisting of two staves. The top staff features a treble clef and contains several measures of music with notes, rests, and accidentals. The bottom staff features a bass clef and contains corresponding notes and rests.

Handwritten musical notation for the fifth system, featuring large numbers "3" and the word "volta". The notation includes notes, rests, and accidentals.

4



Handwritten musical notation for Clarinet and Oboe. The Clarinet part (top staff) begins with a treble clef and a key signature of two flats. The Oboe part (bottom staff) begins with a bass clef and a key signature of two flats. The notation includes various rhythmic values and accidentals.

Handwritten musical notation with a double bar line and the word "Da capo" written above and below the bar line. The notation includes a treble clef and a key signature of two flats.

