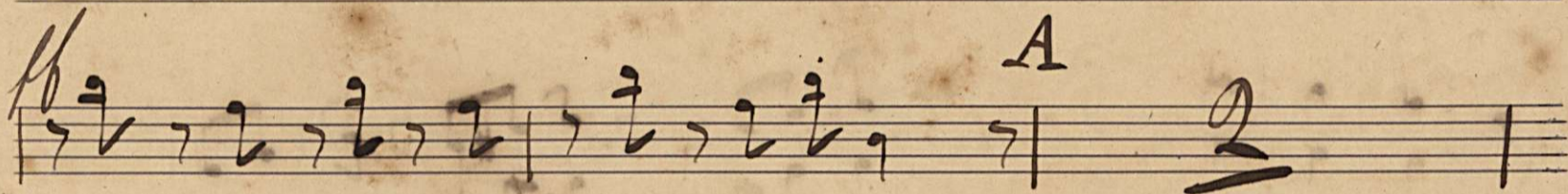
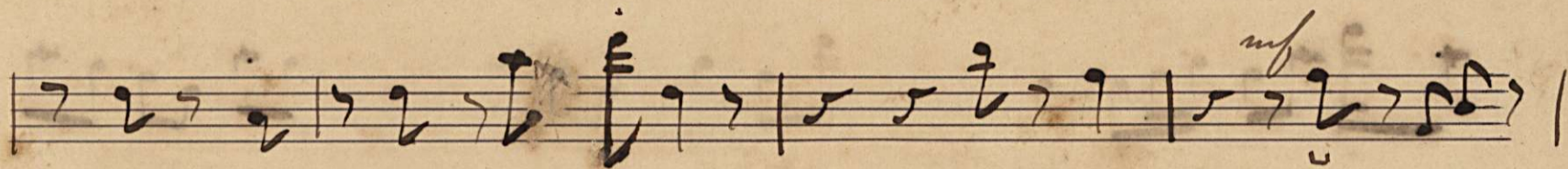
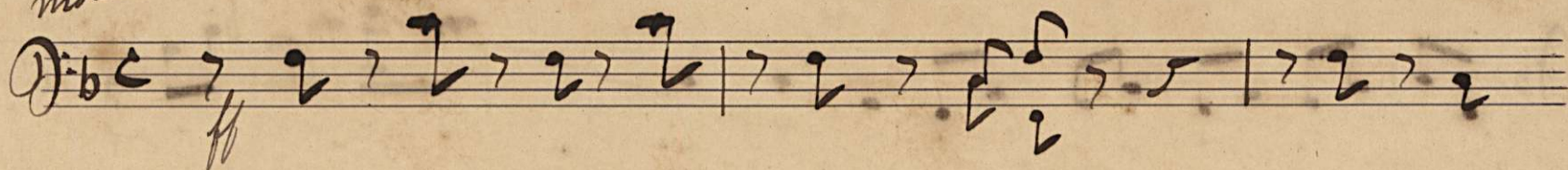


Cesar Franck

A-675992

c. basso

moderato



Handwritten musical notation on a single staff, featuring a treble clef, a key signature of one flat (Bb), and a 4/4 time signature. The notation includes eighth and sixteenth notes, rests, and dynamic markings such as *glissando* and *glis*. A fermata is placed over the final note of the first measure.

Two empty musical staves.

Handwritten musical notation on a single staff, featuring a treble clef and a 4/4 time signature. The notation includes eighth and sixteenth notes, rests, and dynamic markings such as *glis*. A fermata is placed over the final note of the first measure.

Two empty musical staves.

Handwritten musical notation on a single staff, featuring a treble clef and a 4/4 time signature. The notation includes quarter and eighth notes, rests, and dynamic markings such as *rit*, *pp*, and *pp*. A section marker **B** is placed above the staff.



Handwritten musical notation on a single staff, featuring a treble clef and a 4/4 time signature. The notation includes quarter and eighth notes, rests, and dynamic markings such as *pp*, *pp*, and *pp*. A section marker **C** is placed above the staff.

Two empty musical staves.

Handwritten musical notation on a single staff, featuring a treble clef and a 4/4 time signature. The notation includes quarter and eighth notes, rests, and dynamic markings such as *pp*.

Two empty musical staves.

Handwritten musical notation on a single staff, featuring a treble clef and a 3/4 time signature. The notation includes quarter and eighth notes, rests, and dynamic markings such as *mb* and *arco*. A section marker **D** is placed above the staff.

Handwritten musical notation on a single staff, featuring a treble clef and a 4/4 time signature. The notation includes quarter and eighth notes, rests, and dynamic markings such as *mb* and *arco*. A section marker **da capo** is placed below the staff.

